

Driver installation manual.

This manual describes how to install the driver for the LID572. The driver will create a comport for the LID572. This is the easiest way to communicate with the LID572.

When the LID572 is plugged in for the first time, a driver has to be installed. The drivers are part of the Soft57x PC program (minimum version 6.20) which can be downloaded at www.dorset.nu . After installation the drivers are located at:

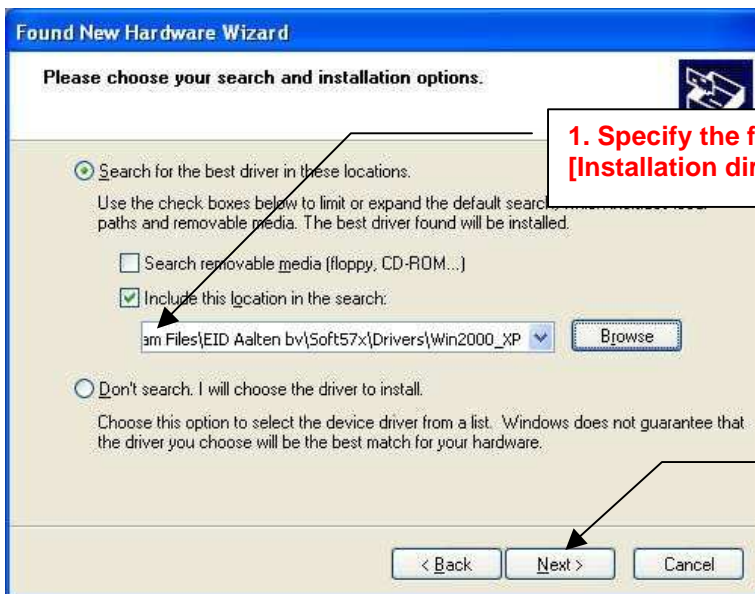
"[Installation dir]\Drivers\WIN2000_XP". In the following steps you will see how to install the driver.

After the LID572 is plugged in, the following window will show:



1. Choose "Install from a list or specific location"

2. Click "Next"



1. Specify the following search path: [Installation dir]\Drivers\WIN2000_XP

2. Click "Next"



Click "Continue Anyway"



Click on "Finish"